

CONSULTANT

PROFESSIONAL SEALS

DOWLING ORCHARD BUSINESS PARK

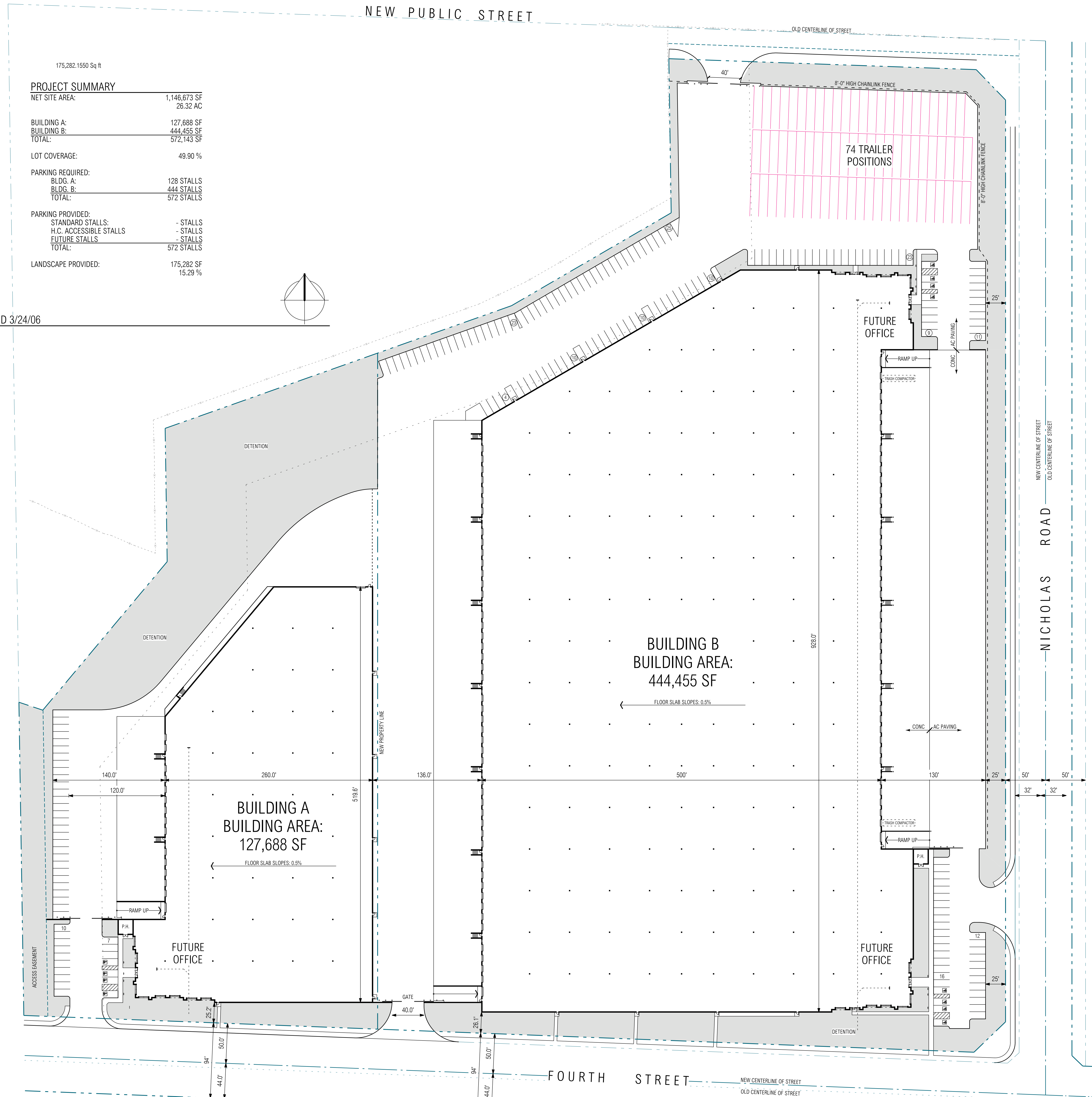
CITY OF BEAUMONT,
CALIFORNIA

TRAMMELL CROW COMPANY
3 PARK PLAZA, SUITE 1600
IRVINE, CA 92614
PHONE: 949-477-4797
FAX: 949-477-9107

CD		
BID		
PC		
DD	12/19/05	DESIGN DEVELOPMENT
SD	5/31/05	SCHEMATIC DESIGN
MARK	DATE	DESCRIPTION

RG&A PROJECT NO:	04112.00
OWNER PROJECT NO:	00000.00
CAD FILE NAME:	04112.00.A1-1
DRAWN BY:	CS
CHKD BY:	MG
COPYRIGHT	RG&A, OFFICE OF ARCHITECTURAL DESIGN

SHEET TITLE
SITE PLAN



SITE PLAN - DATED 3/24/06
SCALE: 1" = 50'-0"

