

520,326 SF

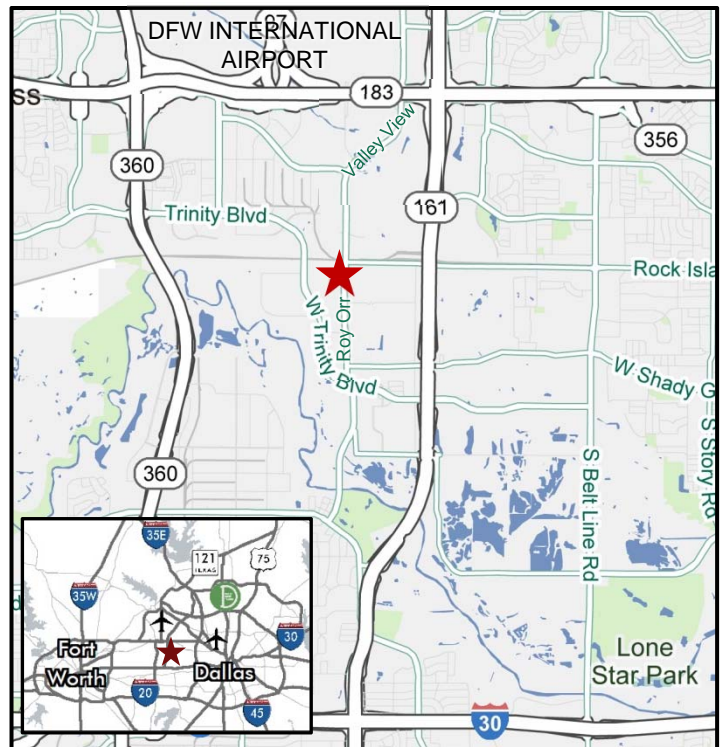
DFW SOUTHGATE



3550 ROY ORR BLVD. | GRAND PRAIRIE, TEXAS

FEATURES

- State-of-the-Art 520,326 SF on a 28.86 Acre Lot
- 32' Clear Height
- Building Dimensions: 580' x 884'
- Column Spacing: 52' x 51.11' (52' x 60' Staging)
- ESFR Sprinkler System
- 95 Dock High & 4 Ramps
- Cross Dock with 193'-246' north truck court & 193' south truck court
- 127 Trailer Storage Positions & 277 Auto Parking Spaces
- Private drive allows for circulation/truck queuing
- 2.3-acre adjacent lot allowing for an additional 51 trailer storage spaces, outside storage or additional auto parking
- Triple Freeport
- City Tax Abatements on Real Property & Business Personal Property are available dependent on job creation
- Central Dallas/Fort Worth location, 8 miles south of DFW International Airport . Easy accessibility to 4 major arterials.
– I-30, SH 161, SH 183 and SH 360



FOR MORE
INFORMATION
PLEASE CONTACT:

Dave Anderson
Executive Vice President
O: 214.979.6500
C: 214.533.9009
dave.anderson@cbre.com

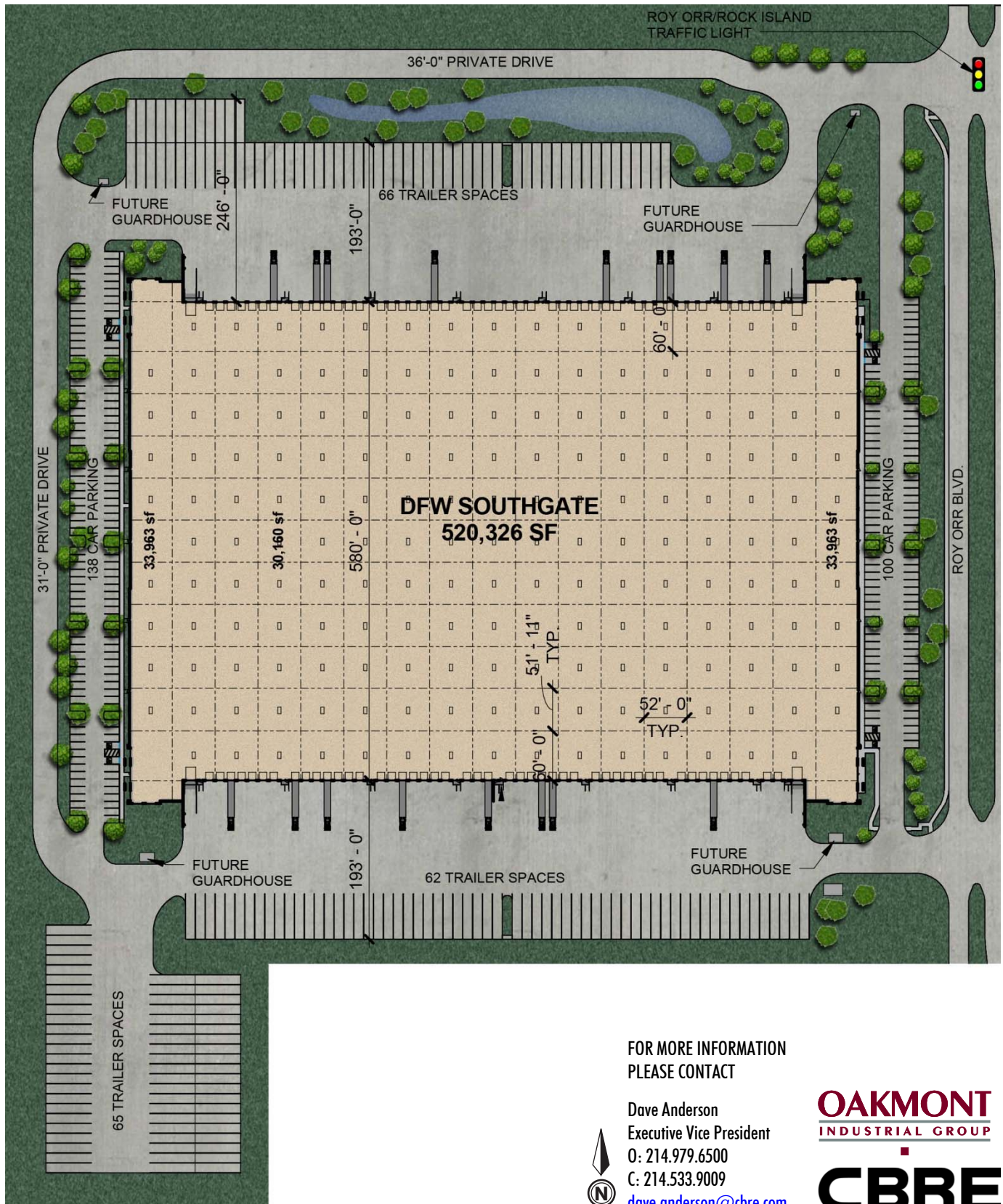


OAKMONT
INDUSTRIAL GROUP

CBRE

DFW SOUTHGATE

3550 ROY ORR BLVD. | GRAND PRAIRIE, TEXAS



FOR MORE INFORMATION
PLEASE CONTACT

Dave Anderson
Executive Vice President
O: 214.979.6500
C: 214.533.9009



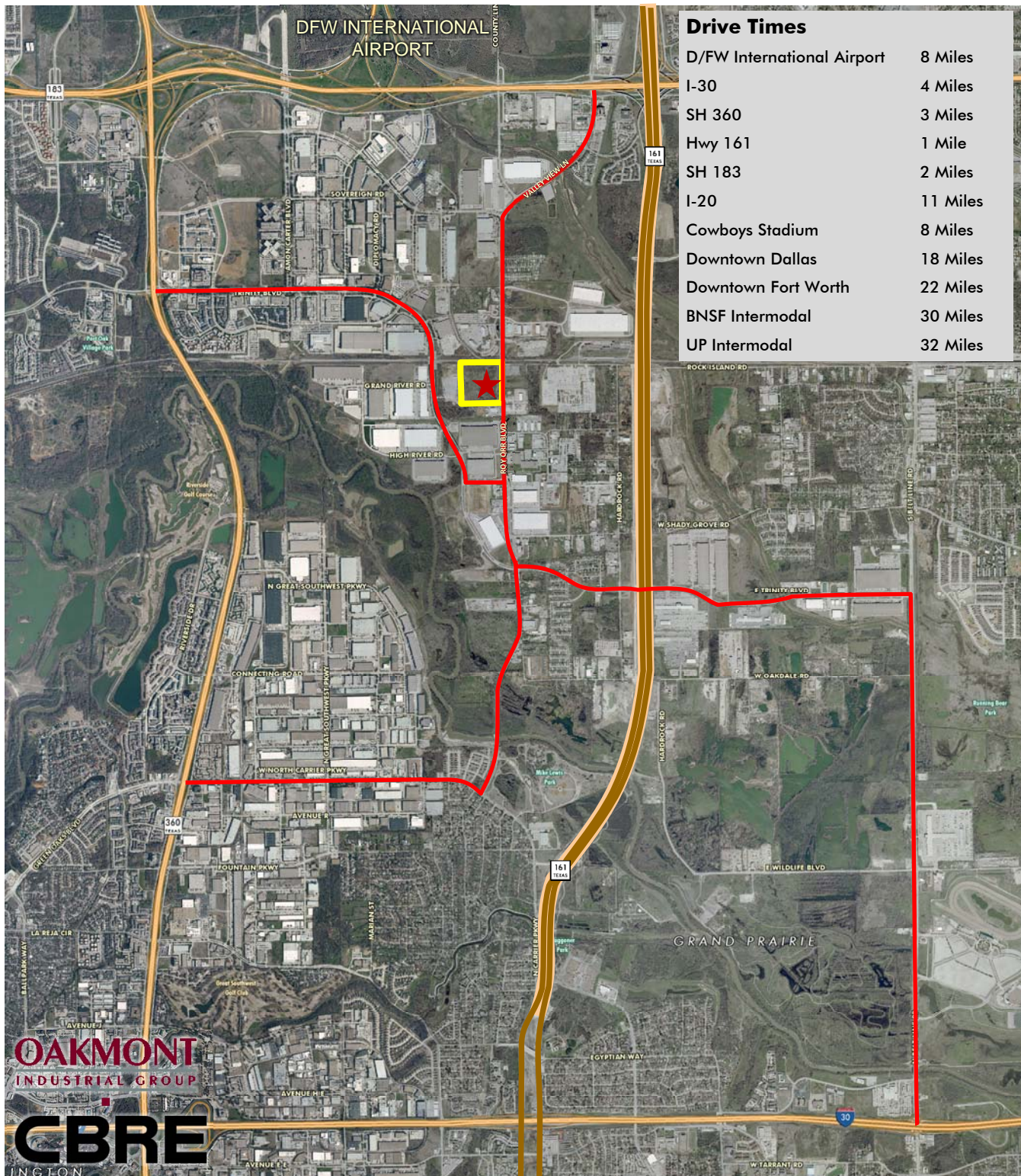
dave.anderson@cbre.com

OAKMONT
INDUSTRIAL GROUP

CBRE

DFW SOUTHGATE

3550 ROY ORR BLVD. | GRAND PRAIRIE, TEXAS



© 2013 CBRE, Inc. This information has been obtained from sources believed reliable. We have not verified it and make no guarantee, warranty or representation about it. Any projections, opinions, assumptions or estimates used are for example only and do not represent the current or future performance of the property. You and your advisors should conduct a careful, independent investigation of the property to determine to your satisfaction the suitability of the property for your needs. CBRE and the CBRE logo are service marks of CBRE, Inc. and/or its affiliated or related companies in the United States and other countries. All other marks displayed on this document are the property of their respective owners. Photos herein are the property of their respective owners and use of these images without the express written consent of the owner is prohibited.