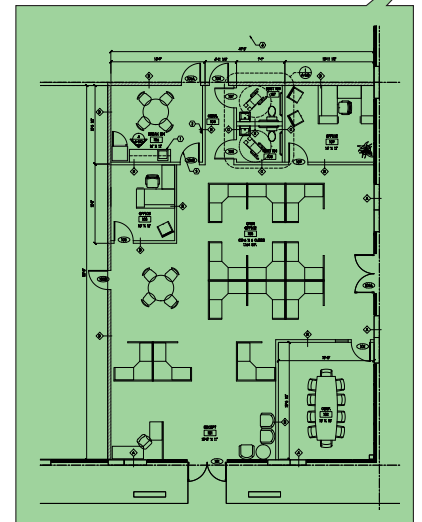
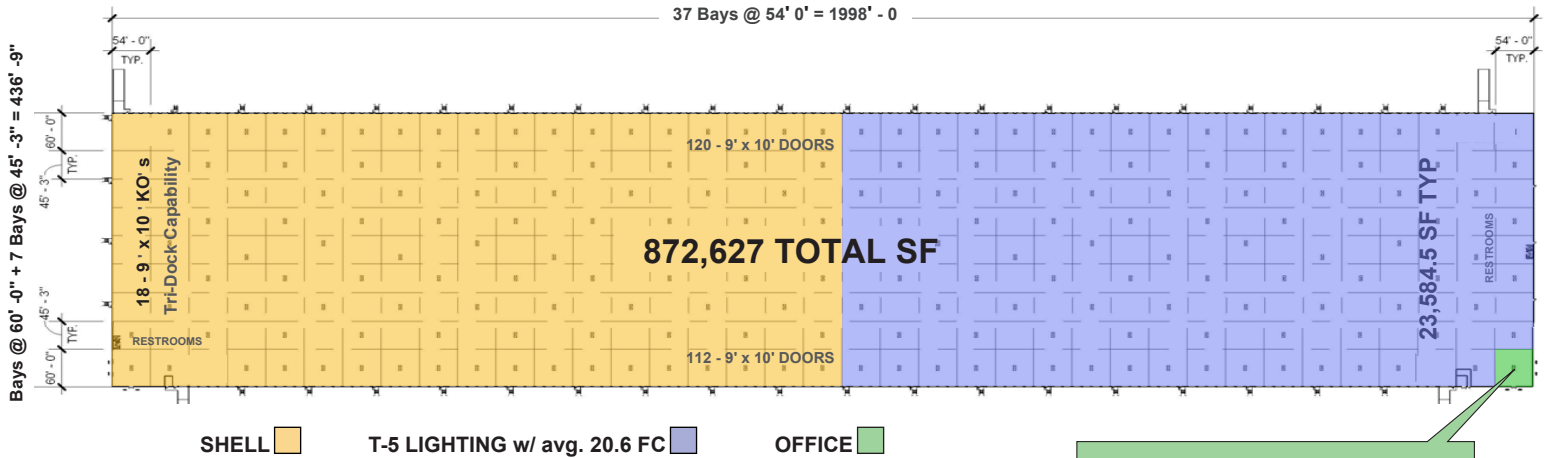
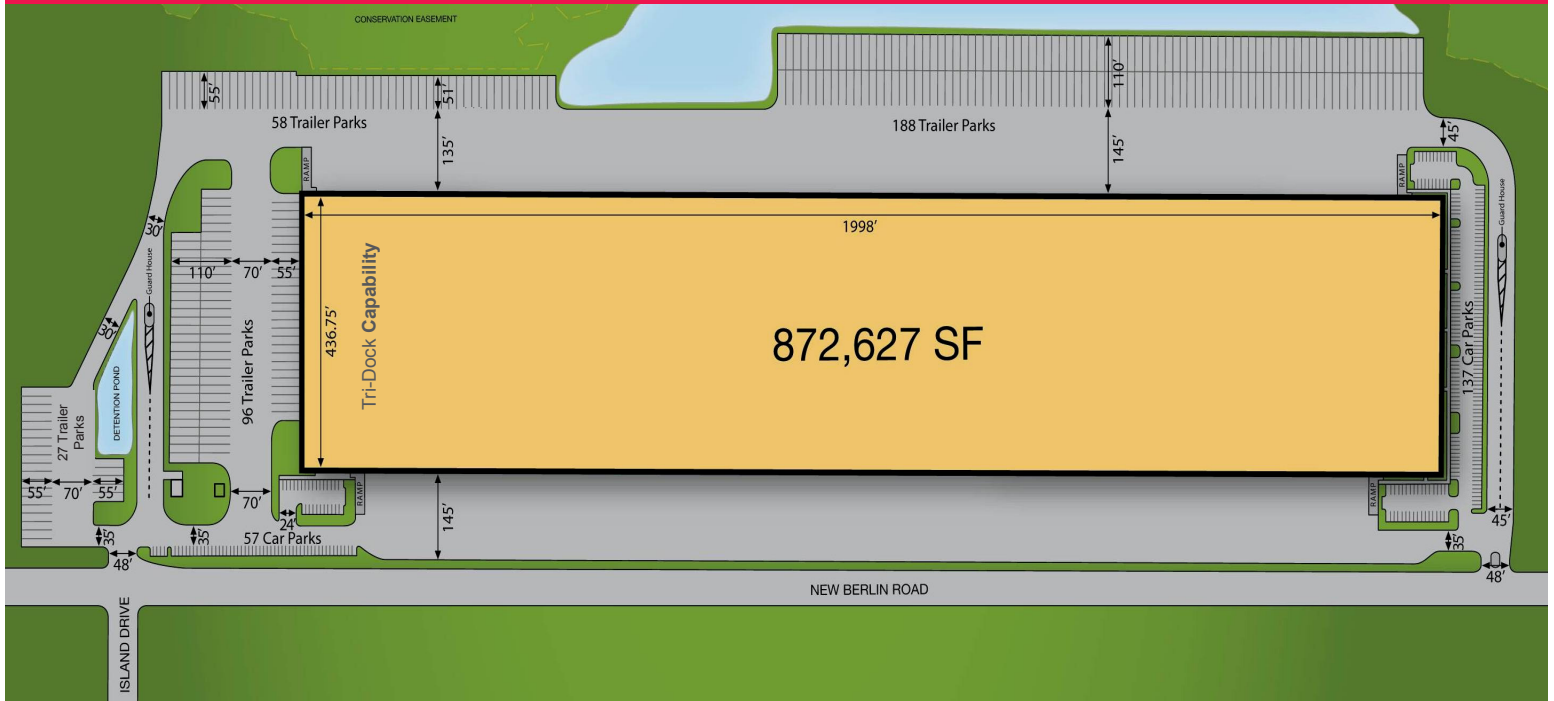


# Site Plan

NorthPort Logistics | 11530 New Berlin Rd | Jacksonville, FL | 32226



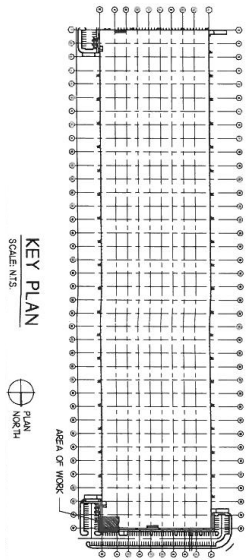
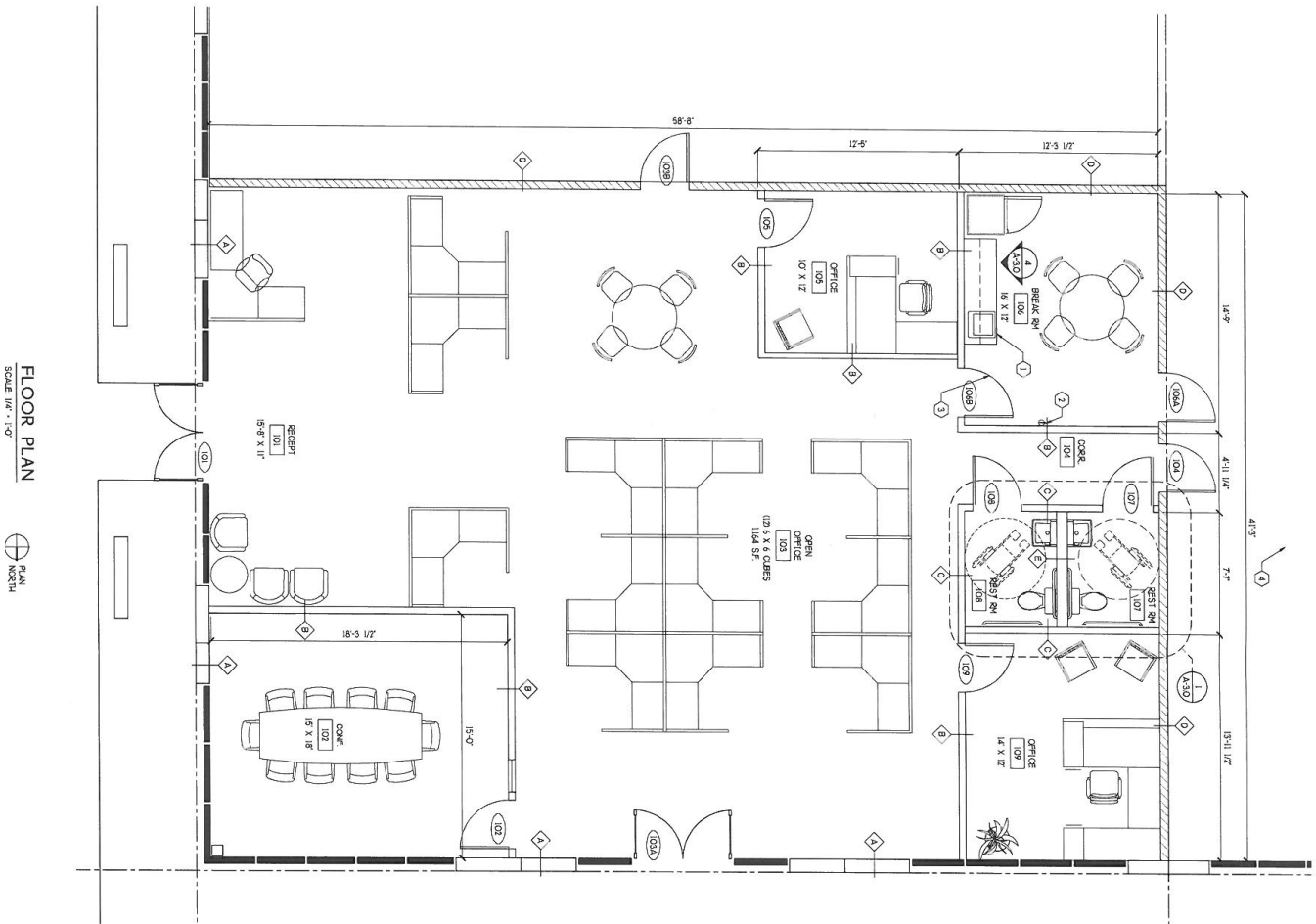
**Newmark Grubb**  
Phoenix Realty Group

**OFFICE FLOOR PLAN**

Procuring broker shall only be entitled to a commission, calculated in accordance with the rates approved by our principal only if such procuring broker executes a brokerage agreement acceptable to us and our principal and the conditions as set forth in the brokerage agreement are fully and unconditionally satisfied. Although all information furnished regarding property for sale, rental, or financing is from sources deemed reliable, such information has not been verified and no express representation is made nor is any to be implied as to the accuracy thereof and it is submitted subject to errors, omissions, change of price, rental or other conditions, prior sale, lease or financing, or withdrawal without notice and to any special conditions imposed by our principal.

# Office Floor Plan

NorthPort Logistics | 11530 New Berlin Rd | Jacksonville, FL | 32226



- INTERIOR WALL LEGEND**
- 4 FLOOR OVER EXISTING CONC. WALL W/ 1/2" F. FIBERGLASS BATT INSULATION BETWEEN FLOOR TO ROOF ABOVE
  - 5 NEW 3/4" WTL STUDS • 1/2" OC. W/ 5/8" GYP. BO. EACH SIDE - FLOOR TO UNDERSIDE OF CEILING
  - 6 3/4" WTL STUDS • 1/2" OC. - FLOOR TO UNDERSIDE OF CEILING W/ 3/4" FIBERGLASS INSULATION BATT OPPOSITE SIDE W/ 3/4" FIBERGLASS INSULATION BATT BETWEEN FLOOR AND CEILING
  - 7 3/4" WTL STUDS • 1/2" OC. W/ 5/8" GYP. BO. EACH SIDE - FLOOR TO UNDERSIDE OF CEILING
  - 8 3/4" WTL STUDS • 1/2" OC. W/ 5/8" GYP. BO. EACH SIDE - FLOOR TO UNDERSIDE OF CEILING W/ 3/4" FIBERGLASS INSULATION BATT BETWEEN FLOOR AND CEILING
- KEY NOTES**
- 1 6" OF UPPER LOWER CABINETS
  - 2 FIRE EXTINGUISHER
  - 3 THIS DOOR TO HAVE KICK LOCK FROM BREAK ROOM SIDE
  - 4 THE STORAGE WAREHOUSE SHALL BE CEASED THE RENOVATION WORK IS COMPLETED

## Newmark Grubb Phoenix Realty Group

Procuring broker shall only be entitled to a commission, calculated in accordance with the rates approved by our principal only if such procuring broker executes a brokerage agreement acceptable to us and our principal and the conditions as set forth in the brokerage agreement are fully and unconditionally satisfied. Although all information furnished regarding property for sale, rental, or financing is from sources deemed reliable, such information has not been verified and no express representation is made nor is any to be implied as to the accuracy thereof and it is submitted subject to errors, omissions, change of price, rental or other conditions, prior sale, lease or financing, or withdrawal without notice and to any special conditions imposed by our principal.