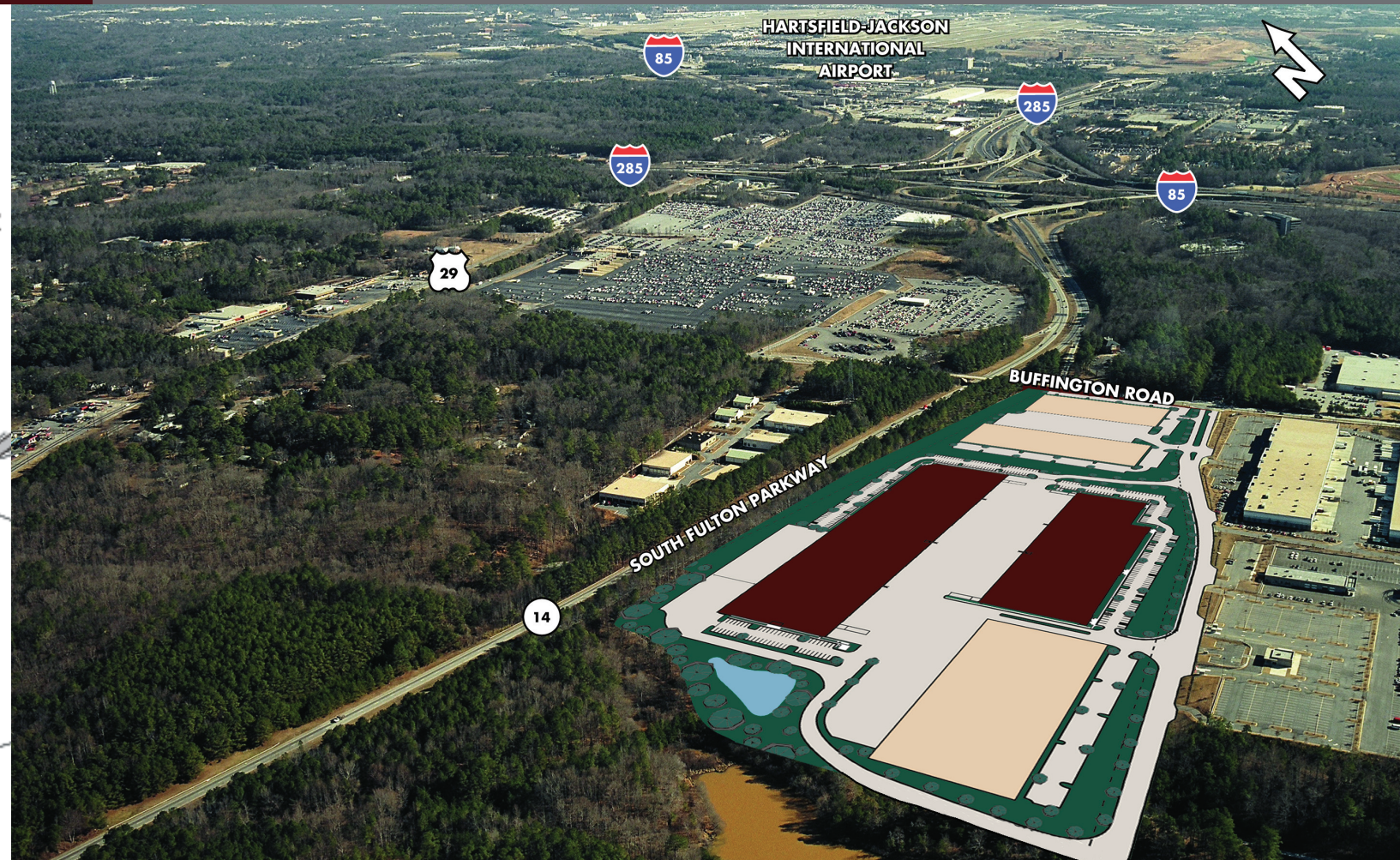


# PARKWAY LOGISTICS CENTRE

SOUTH FULTON PARKWAY ■ FULTON COUNTY, GEORGIA

# PARKWAY LOGISTICS CENTRE

SOUTH FULTON PARKWAY ■ FULTON COUNTY, GEORGIA



Five Buildings - Totaling 755,542 SF

Five Buildings - Totaling 755,542 SF

**Sean Boswell**  
404-877-9268  
sean.boswell@colliers.com

**Chris Cummings**  
404-877-9255  
chris.cummings@colliers.com

**COLLIERS**  
SPECTRUM CAUBLE

Two Midtown Plaza, Suite 1100  
1349 W. Peachtree Street, NE  
Atlanta, Georgia 30309

**OAKMONT**  
INDUSTRIAL GROUP

3520 Piedmont Road  
Suite 100  
Atlanta, Georgia 30305  
www.oakmontre.com



**COLLIERS**  
SPECTRUM CAUBLE

Two Midtown Plaza, Suite 1100  
1349 W. Peachtree Street, NE  
Atlanta, Georgia 30309

# PARKWAY LOGISTICS CENTRE

SOUTH FULTON PARKWAY ■ FULTON COUNTY, GEORGIA

**LOCATION:** South Fulton Parkway & Buffington Road

- 1/2 mile west of I-285 and I-85
- 3 miles from Hartsfield-Jackson International Airport
- 5 miles west of I-75

**CONSTRUCTION:** Concrete tilt-up

**PROJECT/SITE SIZE:** 752,000 square feet on 48.3 acres

**TRUCK COURT:** 220'-270' deep, full-concrete truck court

**LIGHTING:** 400-watt metal halide lighting in warehouse

**WAREHOUSE FLOORS:**

- 6" reinforced concrete with vapor barrier in staging bays
- 6" concrete with vapor barrier typical throughout
- FF50 & FL35 floor tolerance

**FIRE PROTECTION:** ESFR fire sprinkler system

**VENTILATION:** 3 air changes per hour

**ROOF:** 45 mil ballasted EPDM roof / TPO

**WAREHOUSE FINISHES:** White roof deck, columns painted yellow to 10' AFF, interior walls painted white, Ashford formula sealer/hardener on warehouse floors

## 3505 Naturally Fresh Blvd. Building 300

- Available for lease or purchase
- 33,644 SF available
- Rear load - 240' depth
- 32' clear height
- Parking - 37 spaces
- 10 total loading doors (1 per 3,202 SF)
  - 3 - (10' x 10') dock doors
  - 6 - (9' x 10') dock doors
  - 1 - (12'-14') ramp doors
- 45' x 50' interior column spacing; 45' x 60' column spacing at loading bay
- 1,400 AMP, 277/480V, 3-phase power, 4 wire
- 1 skylight per 8,200 SF



## 3515 Naturally Fresh Blvd. Building 500

- 52,036 SF available
- Rear load / 260' depth
- 32' clear height
- Parking - 39 spaces
- 15 dock high doors
- 50' x 50' interior column spacing; 50' x 60' column spacing at loading bays
- 1,700 AMP, 277/480V, 3-phase power, 4 wire
- 1 skylight per 9,200 SF

BUILDING FEATURES

BUILDING FEATURES